

# MONTHLY MEMBERSHIP PROGRESS REPORT

District 318 E

Results as of: 5/31/2024

GMT:

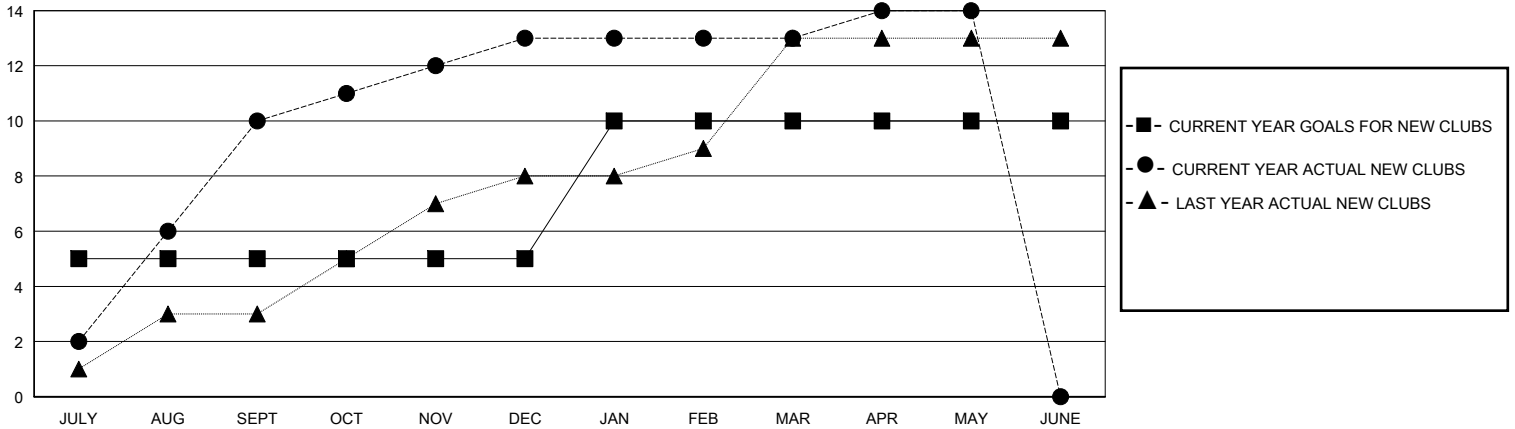
LOCATION INDIA

GMT CA

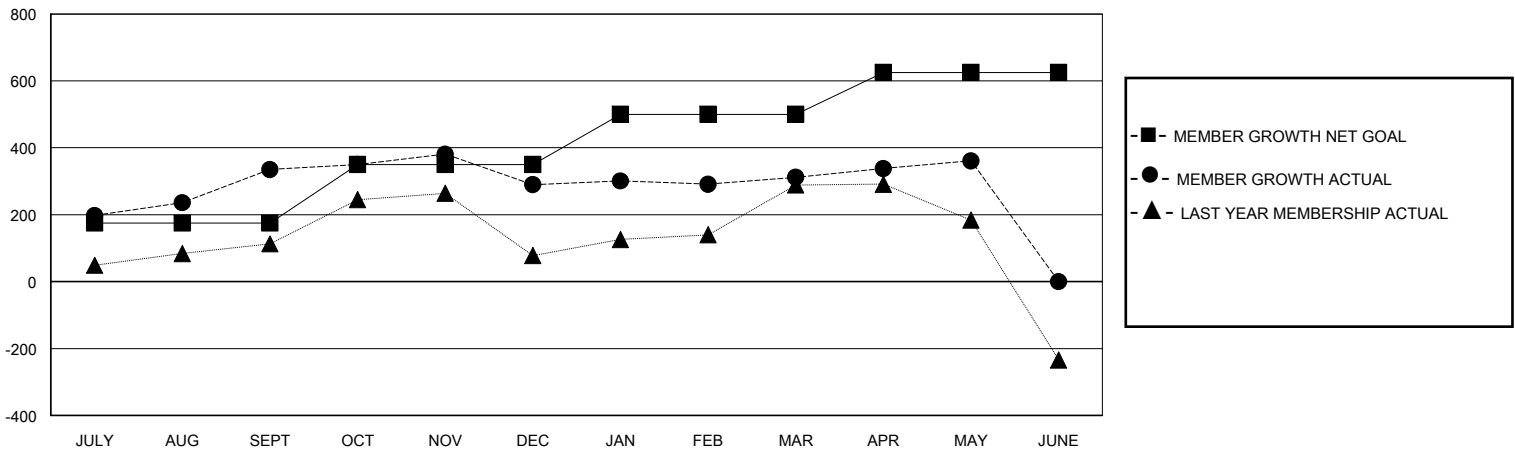
Clubs			
RESULTS FOR 2023-2024			
QUARTER	NEW CLUB GOAL	NEW CLUBS	DROPPED CLUBS
JULY/AUG/SEPT	5	10	2
OCT/NOV/DEC	0	3	3
JAN/FEB/MAR	5	0	2
APR/MAY/JUNE	0	1	3

Members			
RESULTS FOR 2023-2024			
QUARTER	MEMBER GROWTH NET GOAL	MEMBER GROWTH ACTUAL	DROPPED MEMBERS ACTUAL (including transfers)
JULY/AUG/SEPT	175	563	209
OCT/NOV/DEC	175	190	233
JAN/FEB/MAR	150	122	76
APR/MAY/JUNE	125	95	41

GOALS AND ACTUAL NEW CLUBS CUMULATIVE



GOALS AND ACTUAL MEMBERS CUMULATIVE



DROPPED CLUBS: 10	138 CLUBS OF 190 ADDED 1 OR MORE NEW MEMBERS	<u>GENDER DISTRIBUTION</u>	
		MALE	5,159 (79.53%)
<u>DROPPED MEMBERS</u>		FEMALE	1,328 (20.47%)
DECEASED	16	TOTAL FAMILY UNIT MEMBERS 2,260	
CLUB CANCELLED	111	FAMILY MEMBERS PAYING HALF DUES 1,199	
OTHER	430		
TOTAL	557		

[CLICK HERE FOR CUMULATIVE MEMBERSHIP DATA](#)